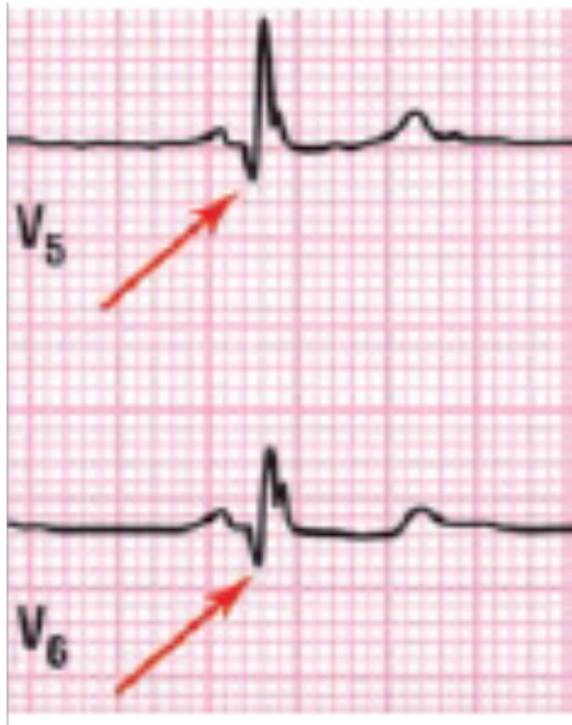


- Anterolateral (age indeterminate or old)



- Abnormal Q waves without significant ST segment elevation in at least 2 consecutive leads from V4 to V6
- Pathologic Q waves defined as ≥ 30 msec (three-quarters of one small box on the ECG grid) in V4, V5, or V6, and these Q waves must be present in at least 2 contiguous leads, and ≥ 1 mm in depth.