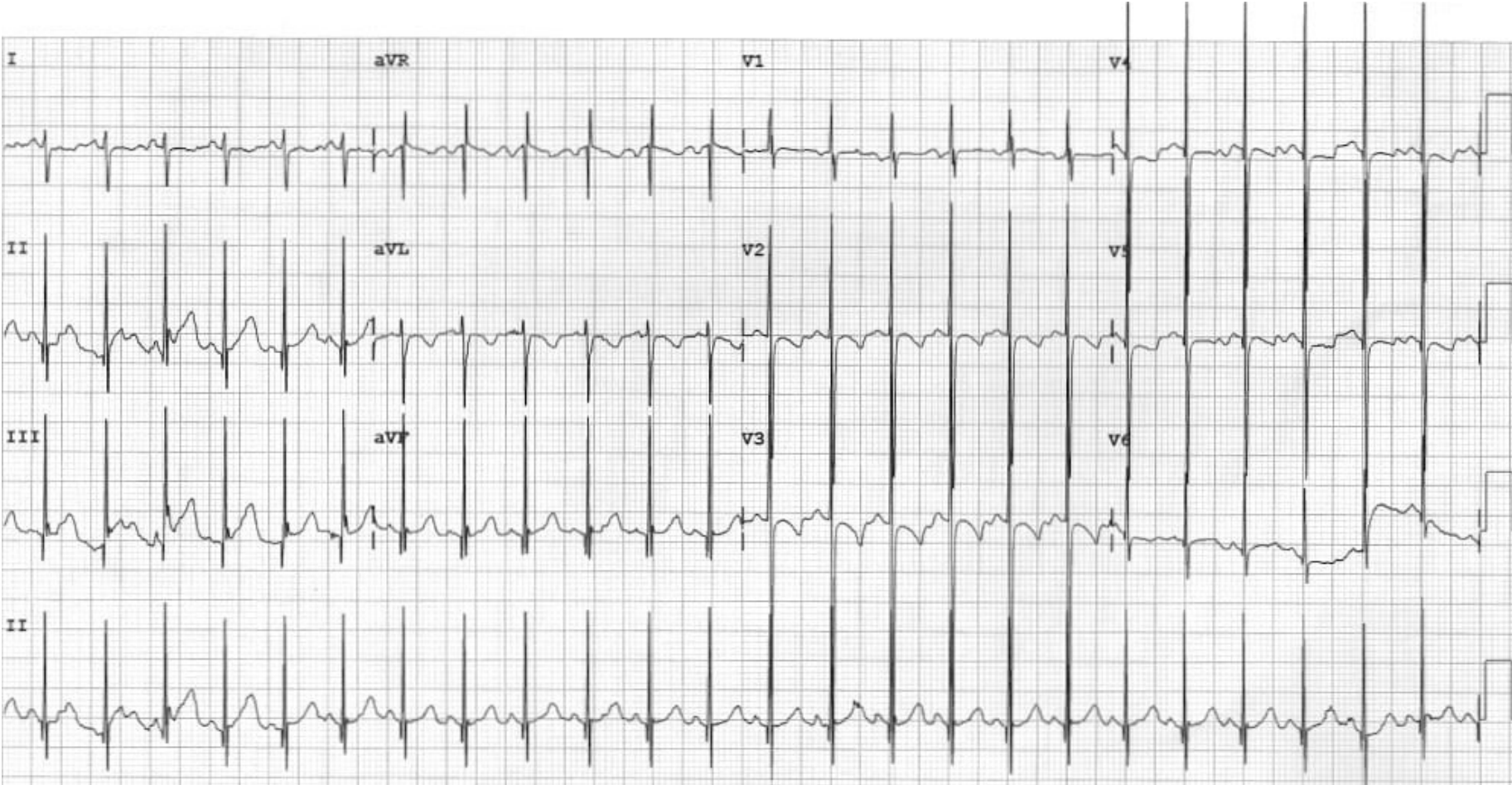


- Combined ventricular hypertrophy



Suggested by any of the following:

- ECG meets one or more diagnostic criteria for LVH and RVH
- Precordial leads show LVH but QRS axis is $> +90^\circ$
- LVH *plus*:
 - R wave $>$ Q wave in aVR, *and*
 - S wave $>$ R wave in V5, *and*
 - T wave inversion in V1
- Large amplitude, equiphasic (R = S) complexes in V3 and V4 (Katz-Wachtel phenomenon)
- Right atrial abnormality/enlargement with LVH pattern in precordial leads