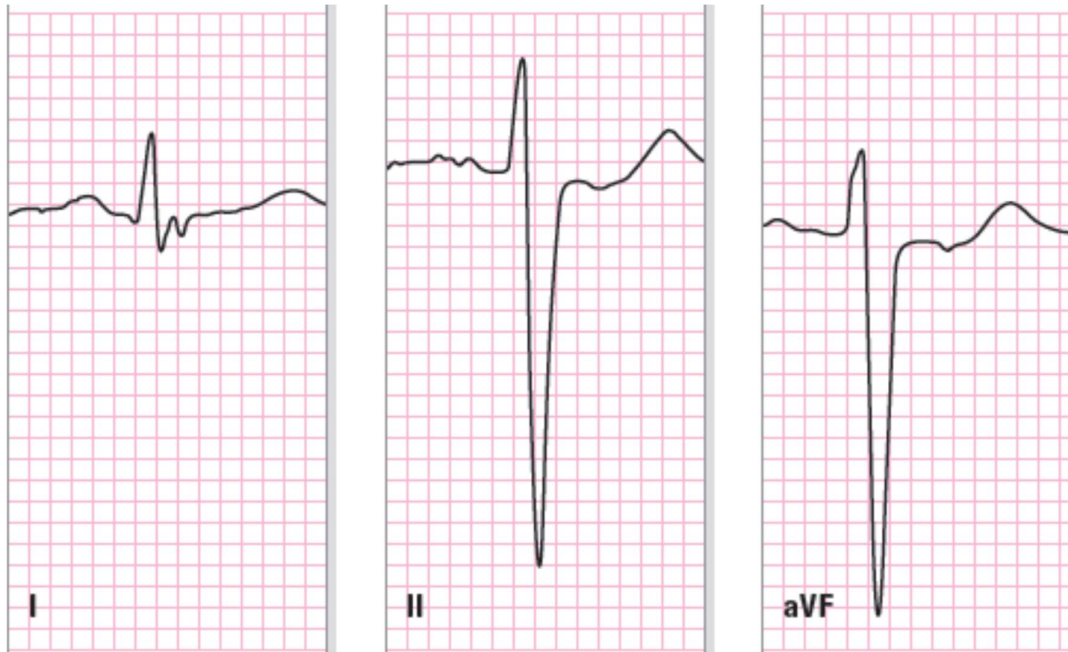


- Left axis deviation ($< -30^\circ$)



- Mean QRS axis between -30° and -90° (net QRS voltage is positive in lead I and negative in leads II and aVF)

Causes include:

- Left anterior fascicular block (LAFB) (if axis $< -45^\circ$)
- Inferior wall MI
- LBBB
- Left ventricular hypertrophy (LVH)
- Ostium primum ASD
- Chronic lung disease
- Hyperkalemia