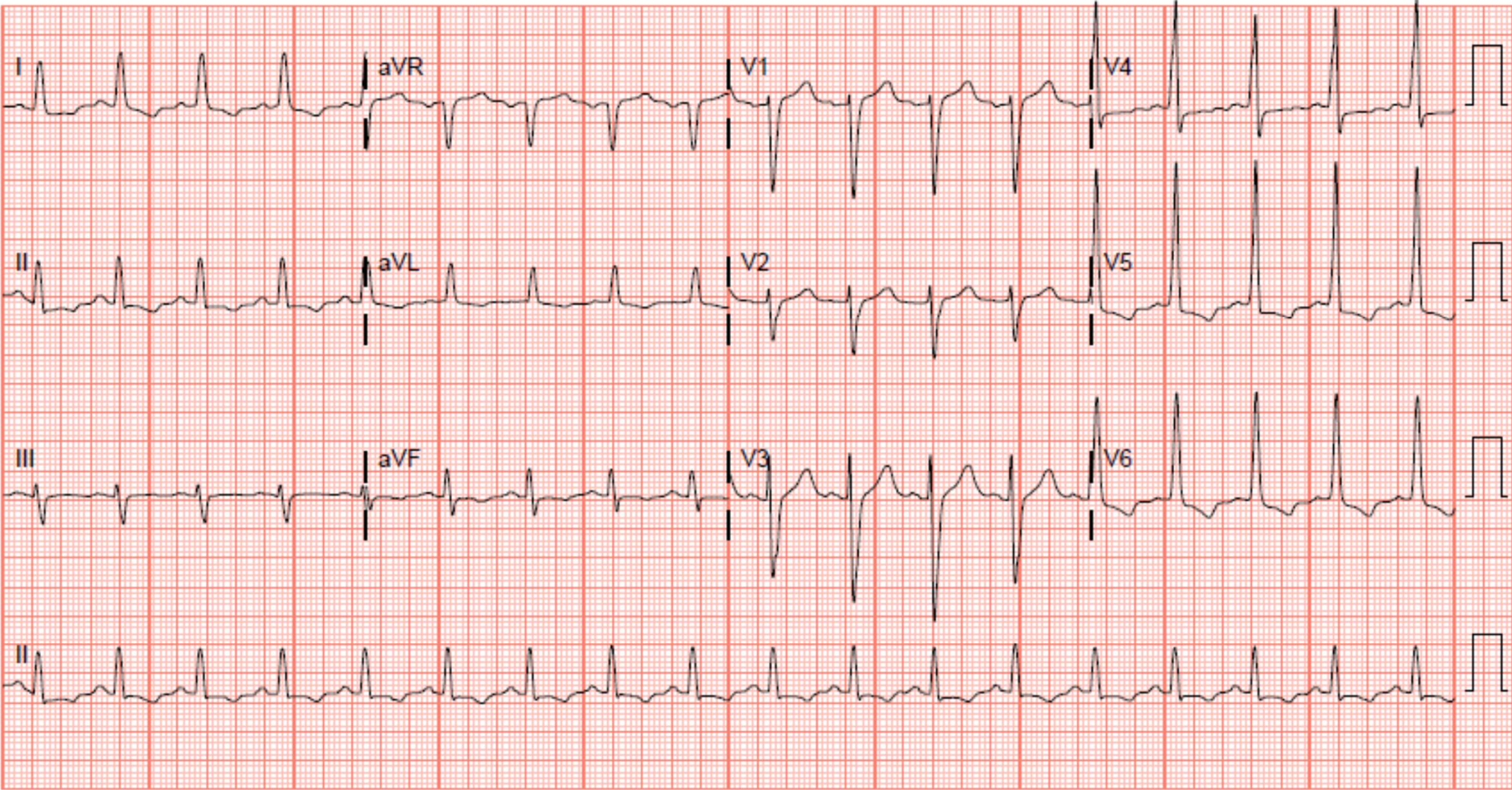


- Left bundle branch block, incomplete (iLBBB)



- LBBB morphology with a QRS duration between 90 and 120 msec. The diagnosis of iLBBB is rarely used because it is difficult to distinguish from other conditions that result in a similar QRS morphology including: nonspecific intraventricular conduction defect (IVCD), LVH, and old anteroseptal MI.