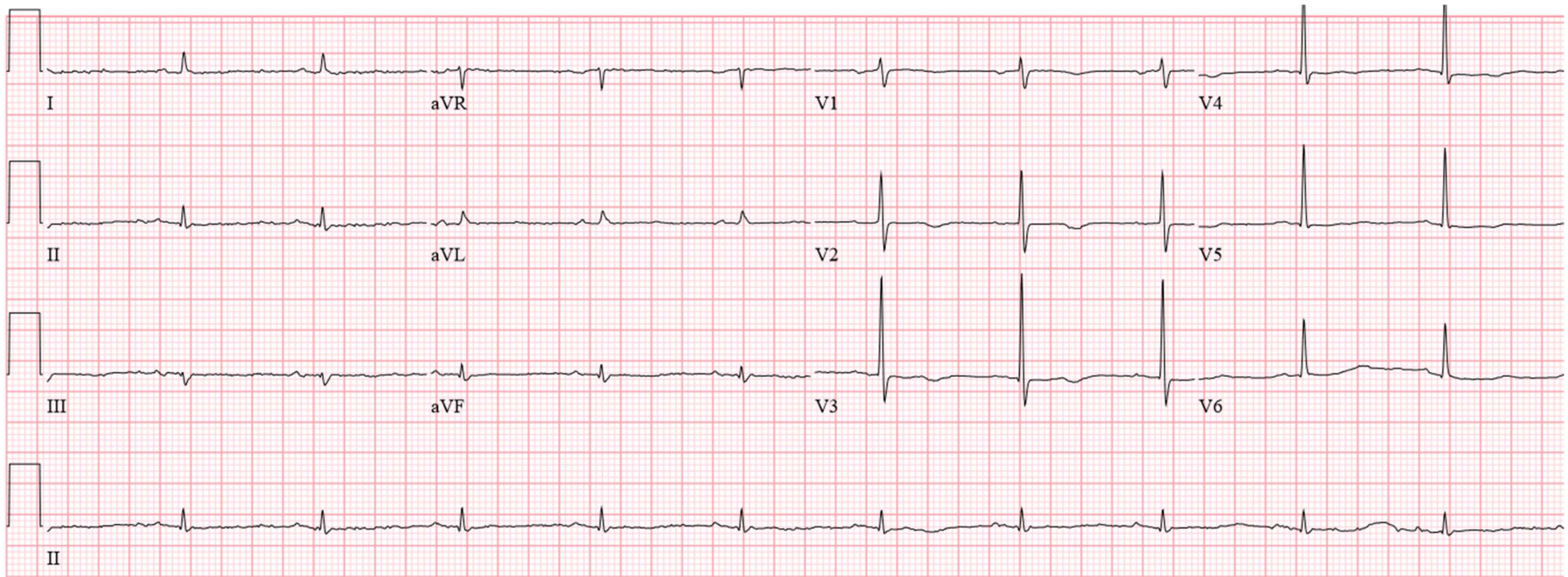


- Low voltage, limb leads



- Amplitude of the entire QRS complex (R wave + S wave) < 5 mm in all limb leads

Causes include:

- Obesity
- Chronic lung disease
- Pulmonary embolus
- Left posterior fascicular block (LPFB)
- Lateral wall MI
- Dextrocardia
- Ostium secundum ASD
- Restrictive or infiltrative cardiomyopathies (e.g., amyloid of the heart)
- Pericardial and/or pleural effusions