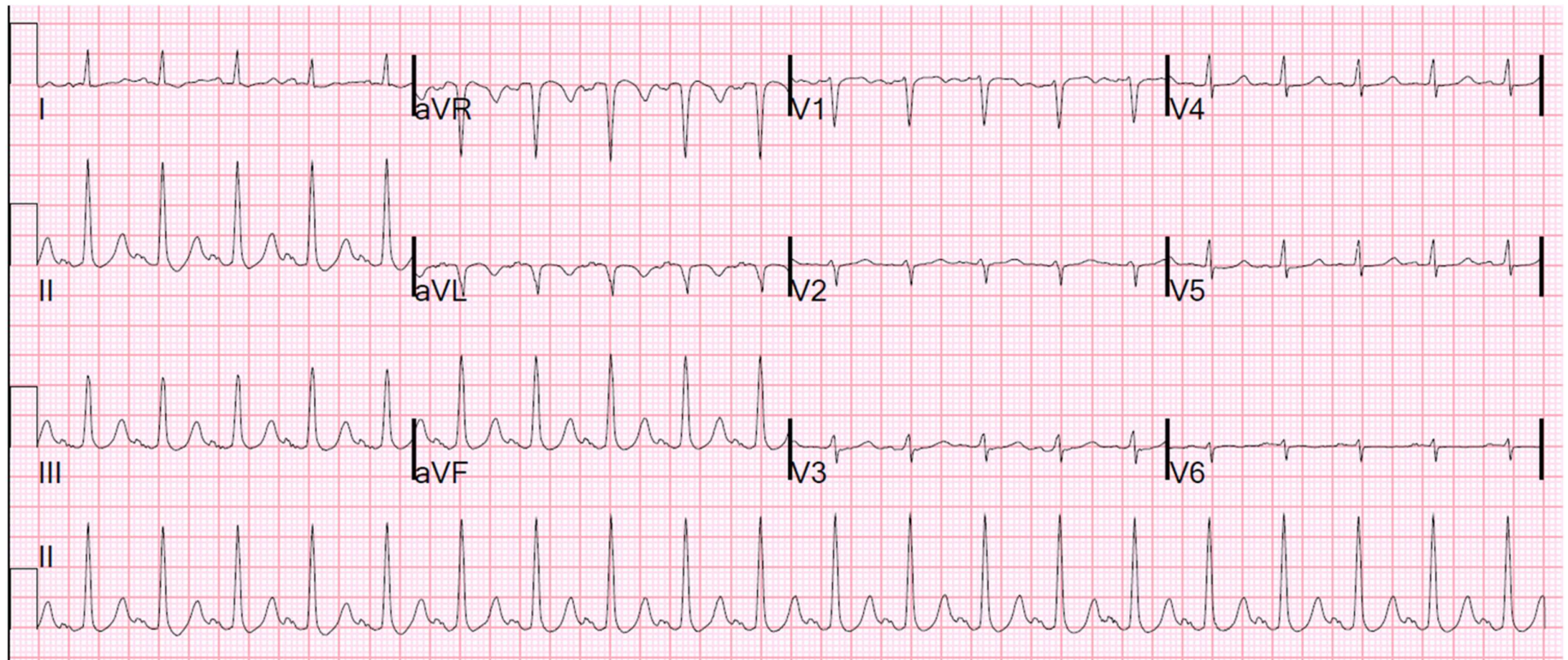


- Low voltage, precordial leads

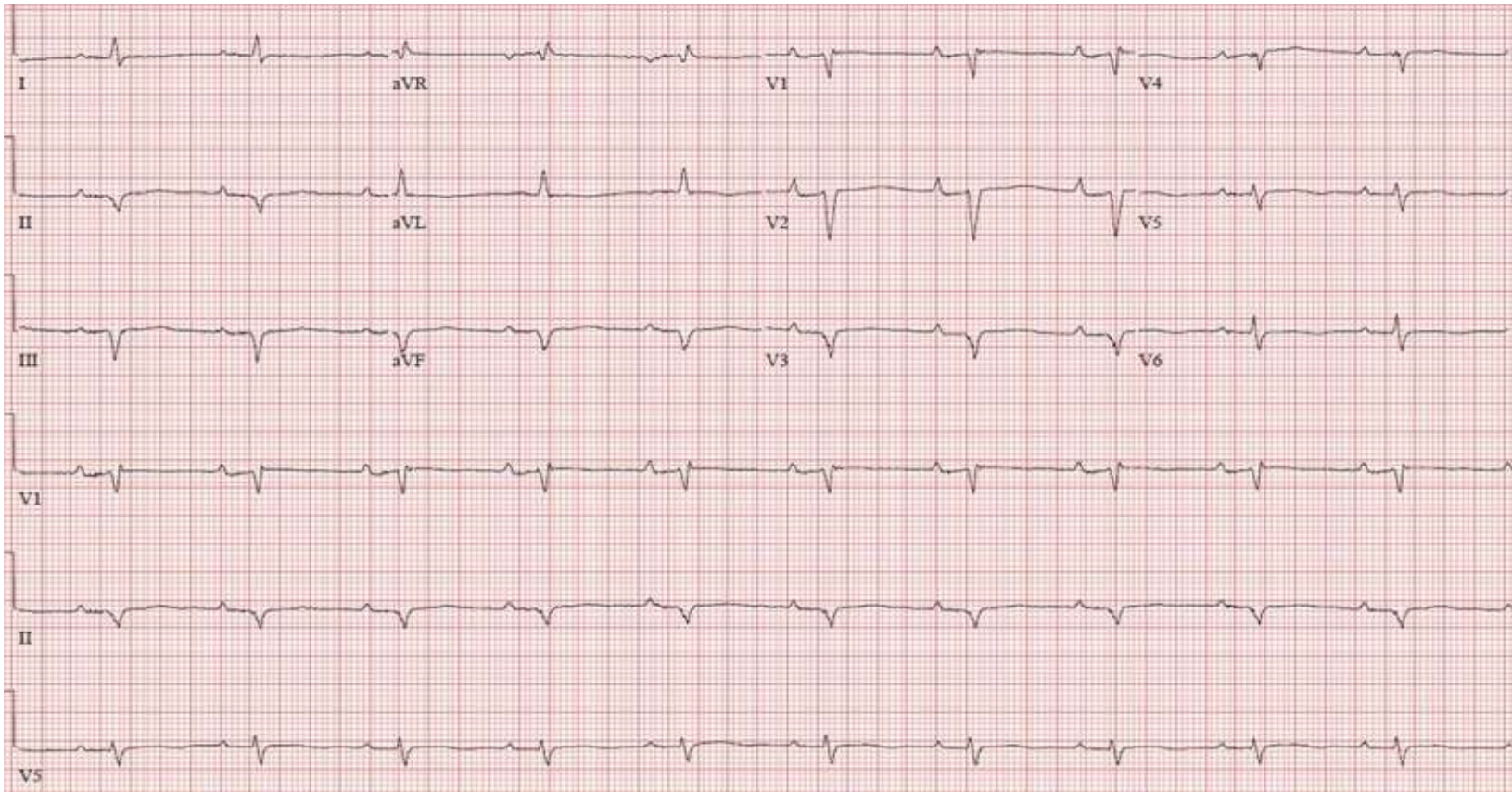


- Amplitude of the entire QRS complex (R wave + S wave) < 10 mm in all precordial leads

Causes include:

- Chronic lung disease
- Pericardial effusion
- Obesity
- Myxedema
- Restrictive or infiltrative cardiomyopathies (e.g., amyloid of the heart)
- Coronary disease with extensive infarction of the left ventricle
- Pleural effusion





*If the amplitude of the entire QRS complex (R wave + S wave) is < 5 mm in all limb leads, and < 10 mm in all precordial leads then on CV Boards you must score for both: Low voltage, limb leads and Low voltage, precordial leads.*