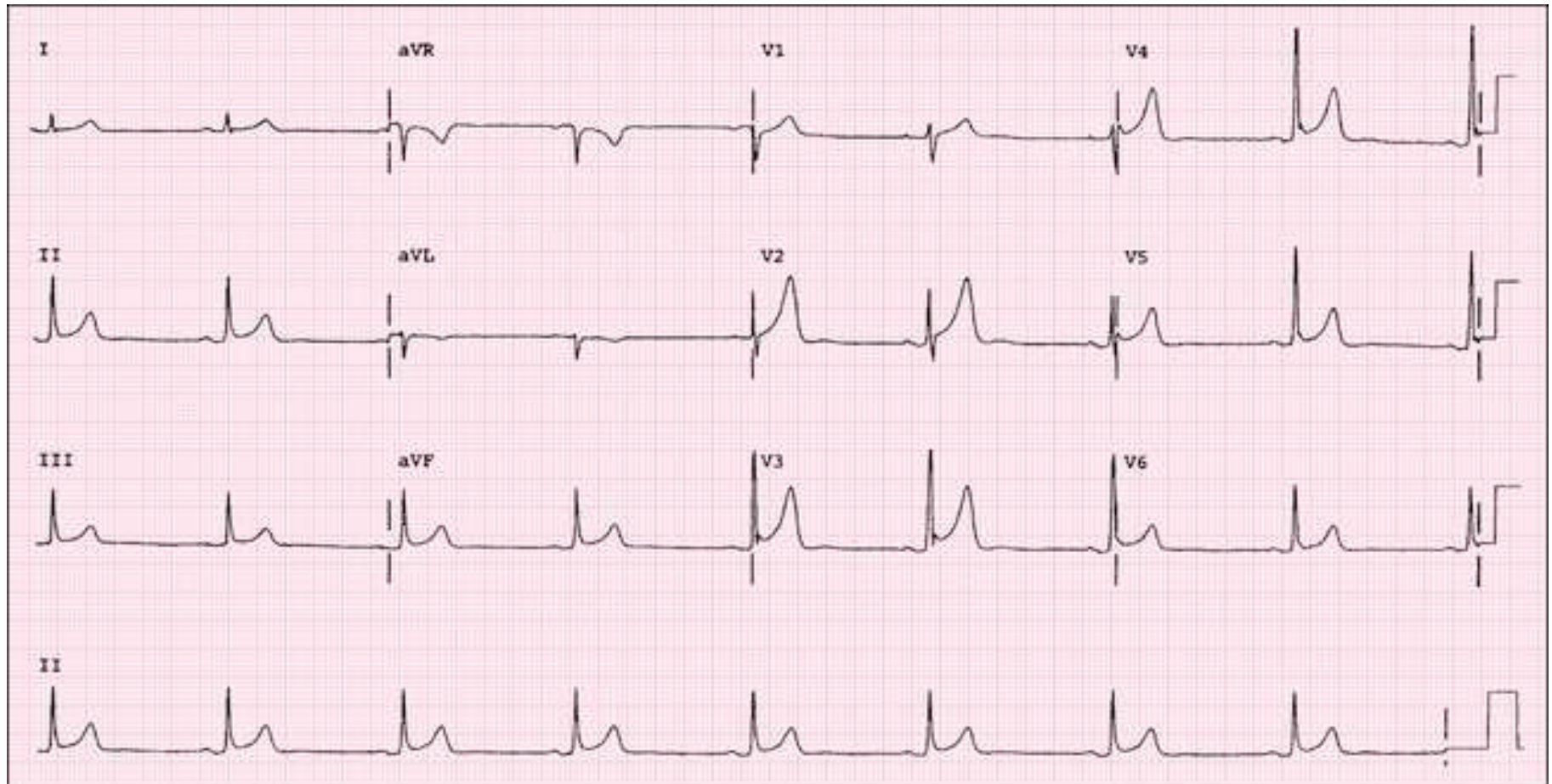


- Normal variant

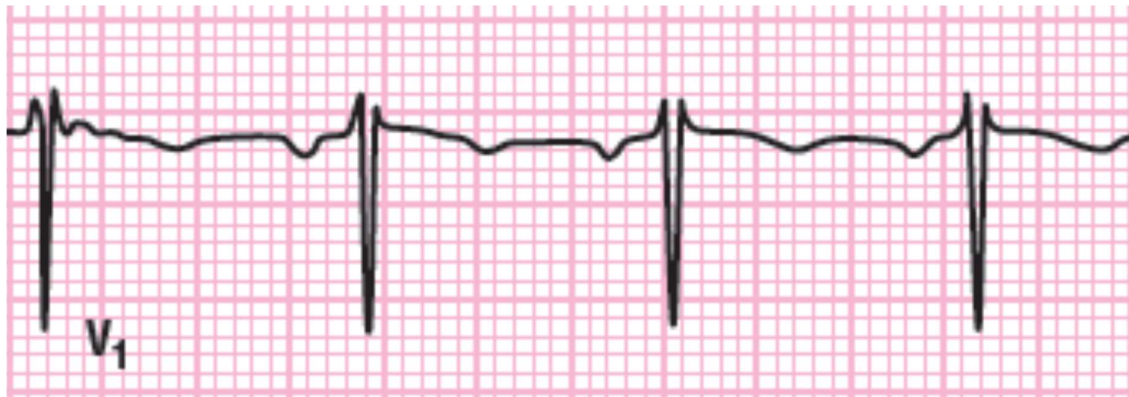
- Early repolarization



- Juvenile T waves



- RSR' or rSr' in lead V1 with QRS duration < 100 msec, r wave amplitude < 7 mm, and r' amplitude smaller than r or S waves



This iRBBB with QRS duration < 100 msec is present in 2% of normals but can also be seen in:

- RVH
- Posterior MI
- Skeletal deformities: pectus excavatum, straight back syndrome, and Brugada syndrome
- High electrode placement of V1 (in 3rd intercostal space instead of 4th)