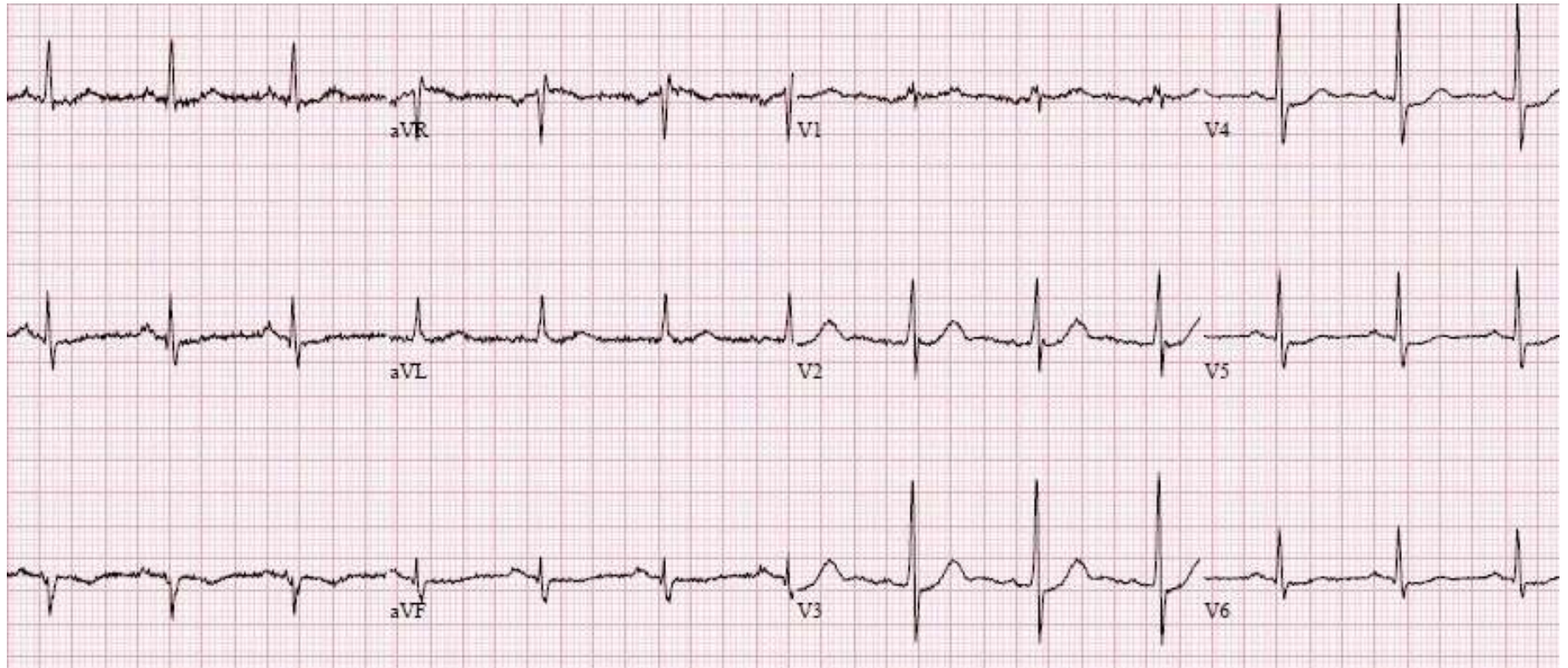


- Posterior MI (age indeterminate or old)



- Dominant R wave ( $R/S > 1$ ) *without* significant ST segment depression in at least two consecutive leads from V1–V3  
Must be distinguished from other causes of a tall R wave in leads V1 or V2, including RVH, WPW, RBBB, and incorrect electrode placement.

Associated old inferior or inferolateral wall myocardial ischemia, injury, or infarction is often present.