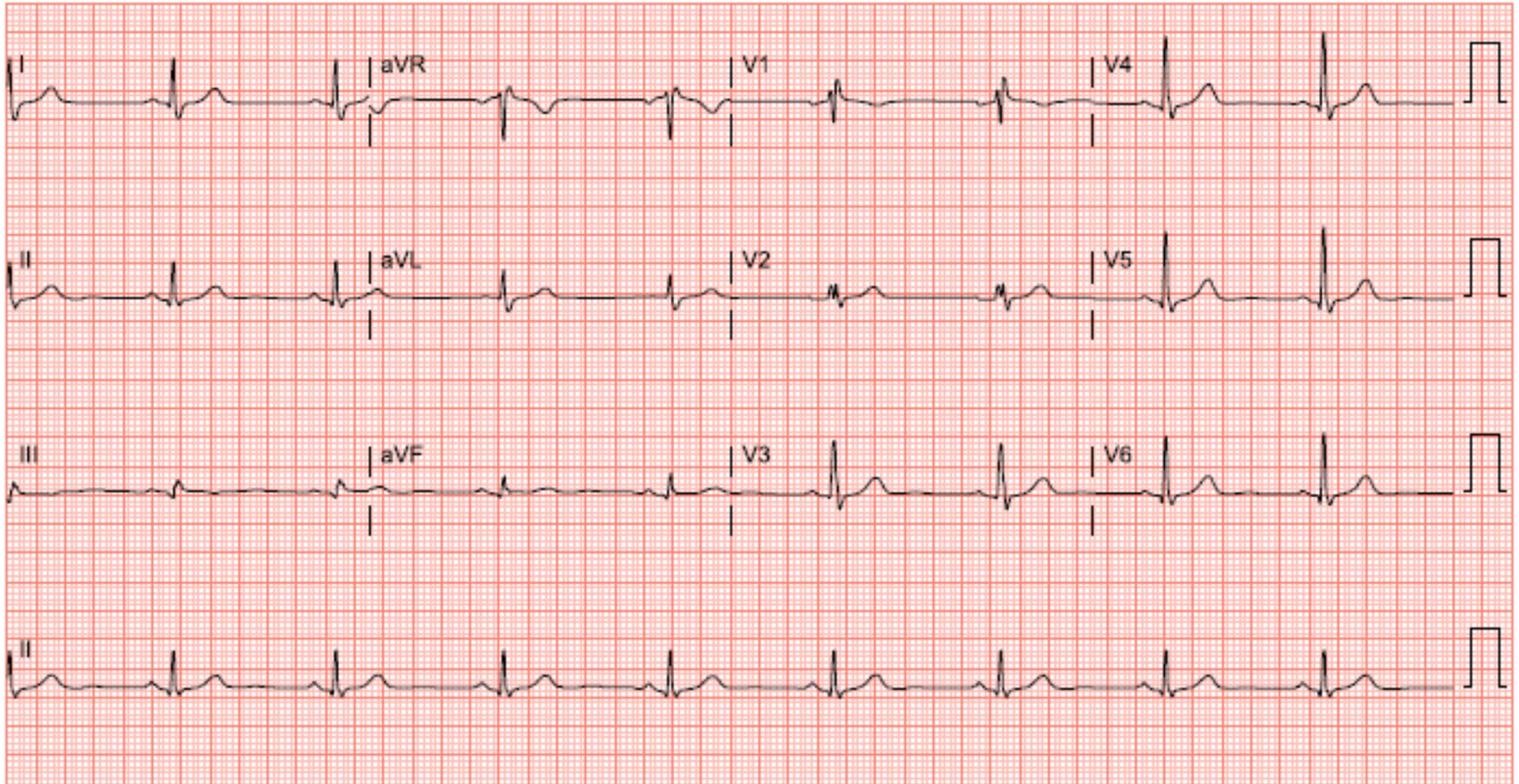


- Right bundle branch block, incomplete (iRBBB)



- RBBB morphology (rSR' in V1) with a QRS duration ≥ 90 but < 120 msec

Other causes of rSR' pattern < 120 msec in lead V1 include:

- Normal variant, usually < 100 msec in duration (present in ~ 2% of healthy adults, and more commonly among children and adolescents)
- Right ventricular hypertrophy (RVH)
- Posterior wall MI
- Incorrect lead placement (electrode for lead V1 placed in 3rd instead of 4th intercostal space)
- Skeletal deformities (e.g., pectus excavatum)
- Atrial septal defect